



WEEK AT A GLANCE

LORD BYNG ELEMENTARY SCHOOL

JANUARY 26TH - 30TH

MONDAY, JANUARY 26TH	TUESDAY, JANUARY 27TH	WEDNESDAY, JANUARY 28TH	THURSDAY, JANUARY 29TH	FRIDAY, JANUARY 30TH
PRO-D DAY ~ NO SCHOOL		 JUMP DAY!		

IT LOOKS LIKE THE SUNSHINE IS SLOWLY MAKING ITS
WAY BACK! ENJOY THE EXTRA DAY THIS WEEKEND
AND MAKE SURE TO WEAR RED NEXT WEDNESDAY FOR
"JUMP DAY" 

THANK YOU TO ALL THAT HAVE DONATED TO THE
HEART & STROKE FOUNDATION!

Reminder

IF YOU HAVEN'T ALREADY DONE SO; PLEASE ENSURE THE NOTICE OF
INTENT TO RETURN FORM IS RETURNED TO THE OFFICE OR YOUR
CLASSROOM TEACHER. THEY WERE RECENTLY SENT HOME WITH
STUDENTS AND ARE AN IMPORTANT PART OF THE PLANNING AND
PREPARATION PROCESS FOR OUR NEXT SCHOOL YEAR, THANK YOU!



Stay Informed with SchoolMessenger Text Alerts (Opt-In)

Our District uses SchoolMessenger to share important school and district updates, including weather closures, emergency notifications, reminders, and time-sensitive announcements.

All families with a current cell phone number in our MyEdBC database will receive a text message from SchoolMessenger (Text #: 978338) in February 2026. To start receiving text alerts, you will need to opt in.

How to opt in:

Watch for a text from SchoolMessenger (Text #: 978338).

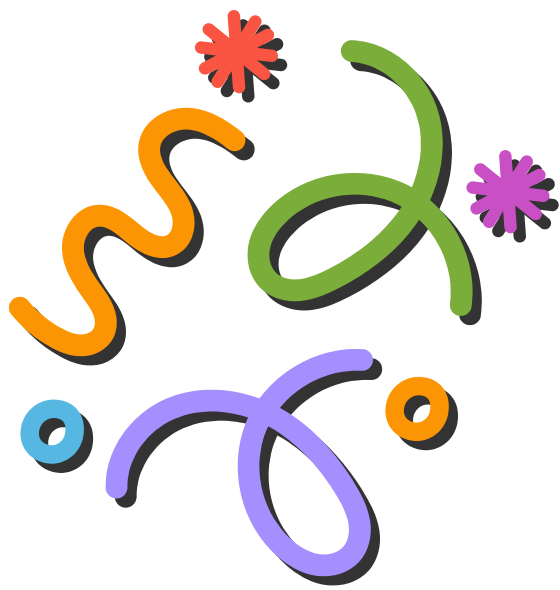
Reply with “Y” to 978338.

You will receive a confirmation message letting you know you are successfully subscribed!

Want alerts on more than one device?

To receive text alerts on multiple phones, each phone number must opt in separately by replying “Y” to 978338.

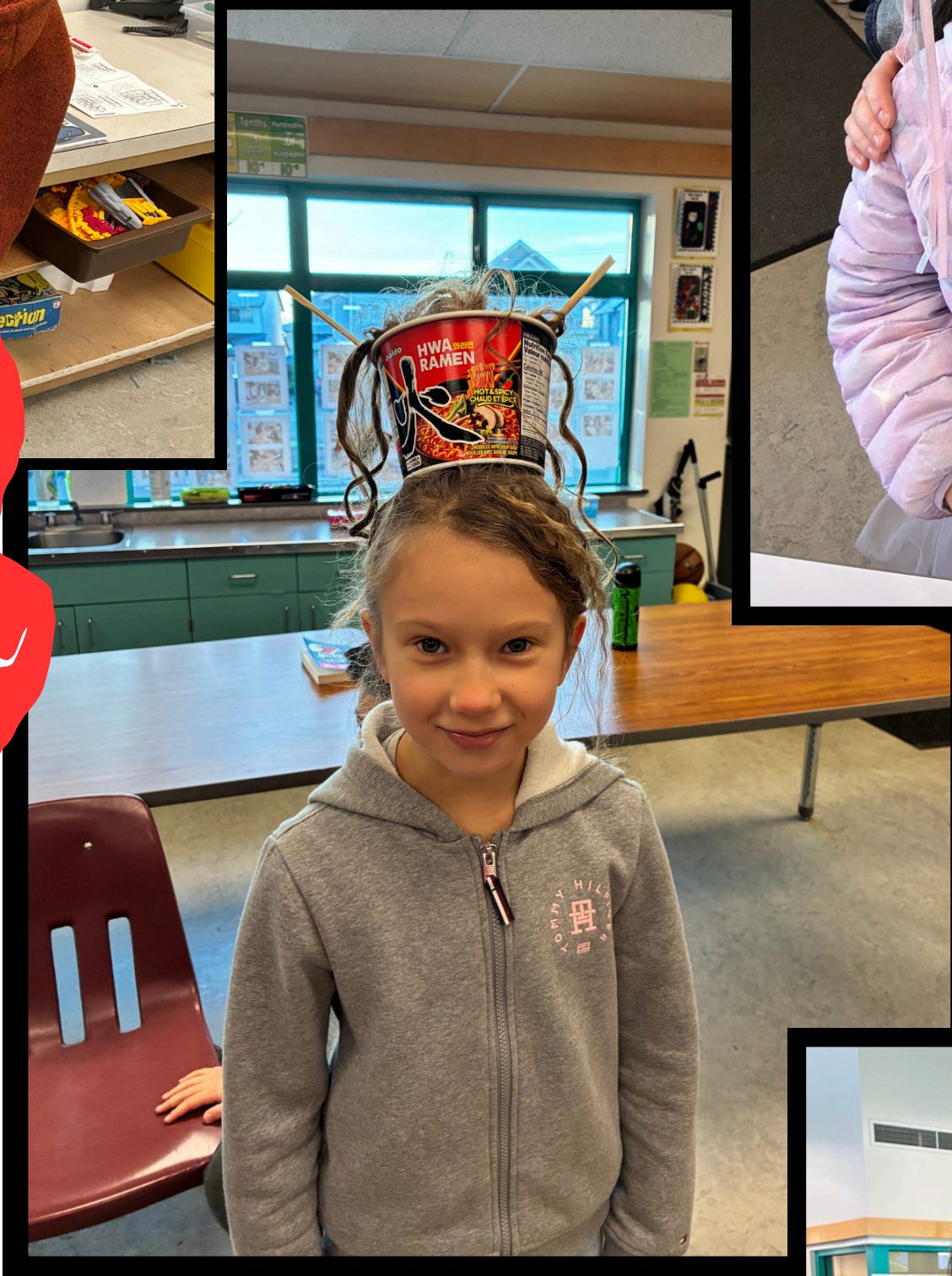
BALLOONS AND.....



NOODLES AND....



CHICKENS AND.....



BOWS AND....



POP CANS AND....



FUN HAIR DAY..... OH MY!!!!!!

IMPORTANT! IMPORTANT! IMPORTANT!

Things to consider if your child feels unwell...

Without proper rest, a child may have a hard time fighting an illness or be at risk for other illnesses. Please keep your child home if they:

- **Have a fever.** Are too sick to take part in all normal school activities.
- **Have a suspected or known communicable disease** (i.e. strep throat, chicken pox, measles).
- **Is vomiting or have diarrhea.** It is recommended that students be symptom free at least 24 hours before returning to school.

Keep your child home until they are able to participate fully in normal school activities or as directed by a health care provider.

If the school finds it necessary to send your child home because of illness, please make sure you have arranged an emergency contact if you are not available.

Lord Byng Elementary
Early Warning Line
604.668.6587



VOLUNTEER INTERPRETERS NEEDED

The Richmond School District is seeking individuals who are fluent in English and other languages to join our Volunteer Interpreter Team.

Help strengthen communication between schools and families by providing language support during parent teacher conferences. Your involvement helps ensure every family feels welcomed and informed.

Training is provided.
All languages welcome.

To express your interest, please email your CV before January 16, 2026 to: culturalinterpreters@sd38.bc.ca



  | [sd38.bc.ca](https://www.sd38.bc.ca)

RICHMOND
SCHOOL DISTRICT NO. 38

Inclement Weather: School Closure Notifications

The district will try to determine school closures due to inclement weather by 6:30 a.m. Updates will be delivered using social media and school and district websites.

No radio or television announcement will be made saying that schools are open. Only school closures will be announced by the media. To reach as many people as possible – as quickly as possible – we work closely with our local media to share information. Listen to local radio stations and follow local news outlets online to also get information about the impact of severe weather or emergencies in our schools.

If snowfall begins while school is in session, in most circumstances, schools will remain OPEN until the end of the school day.

If schools are open, and you wish to keep your child home due to weather conditions, you may do so. Please let your school know of this decision. Parents/guardians are responsible for their child's safe travel to school.

* Facebook: <https://www.facebook.com/RichmondSD38/>
Twitter: <https://twitter.com/RichmondSD38>

CARE AND SUPPORT FOR FAMILIES



Parenting when Anxiety shows up as Anger.

Parenting can become challenging when anxiety shows up as anger in our kids. Join us in a conversation with Karen Peters, Registered Clinical Counsellor, to learn about some strategies that can help us better understand and manage these hard moments.

当焦虑在孩子身上表现为愤怒时，为人父母就会面临挑战。欢迎收听我们与注册临床咨询师凯伦·彼得斯的对话，了解一些可以帮助我们在这些艰难时刻之前、之中和之后应对的策略

Wednesday, February 11, 2026 10:00am to 11:30am online session

SWIS RICHMOND SCHOOL DISTRICT
Settlement Workers
In Schools

IN PARTNERSHIP WITH
FAMILYSMART.CA

.....to register!

CLICK HERE



THE LUNAR NEW YEAR OFFICIALLY BEGINS ON FEBRUARY 17TH

**ALSO KNOWN AS THE SPRING FESTIVAL OR CHINESE NEW YEAR, IT
MARKS THE BEGINNING OF A NEW YEAR ON THE TRADITIONAL
LUNISOLAR CHINESE CALENDAR. IT IS ONE OF THE MOST IMPORTANT
HOLIDAYS IN CHINESE CULTURE.**

**HAPPY NEW YEAR TO ALL THAT CELEBRATE! AS YOU WELCOME THE
YEAR OF THE HORSE, MAY THIS TIME OF RENEWAL BRING JOY,
CONNECTION, AND HOPE TO YOU AND YOUR FAMILIES.**



PIZZA WEDNESDAYS & HOT LUNCH!!!

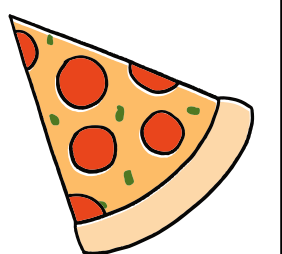
All New Families must register a new account with Munchalunch

Go to <https://munchalunch.com/schools/LordByng> Click the "Register Here" button. The system will guide you through the process of adding children. **After** adding your child(ren) click the "**Order Lunch**" button to order. Next time, just click the "Login here" button to access your account. It is recommended you sign up to receive a reminder email the day before hot lunch is delivered. Returning families will just need to update their students' grade and division upon first signing in.



HOT LUNCH DAYS

EVERY WEDNESDAY: PIZZA FACTORY



FEB 20: TACO LUIS (DUE FEB 12)

For Pizza Wednesdays: Order must be placed and paid in full the **Sunday before that Wednesday**.

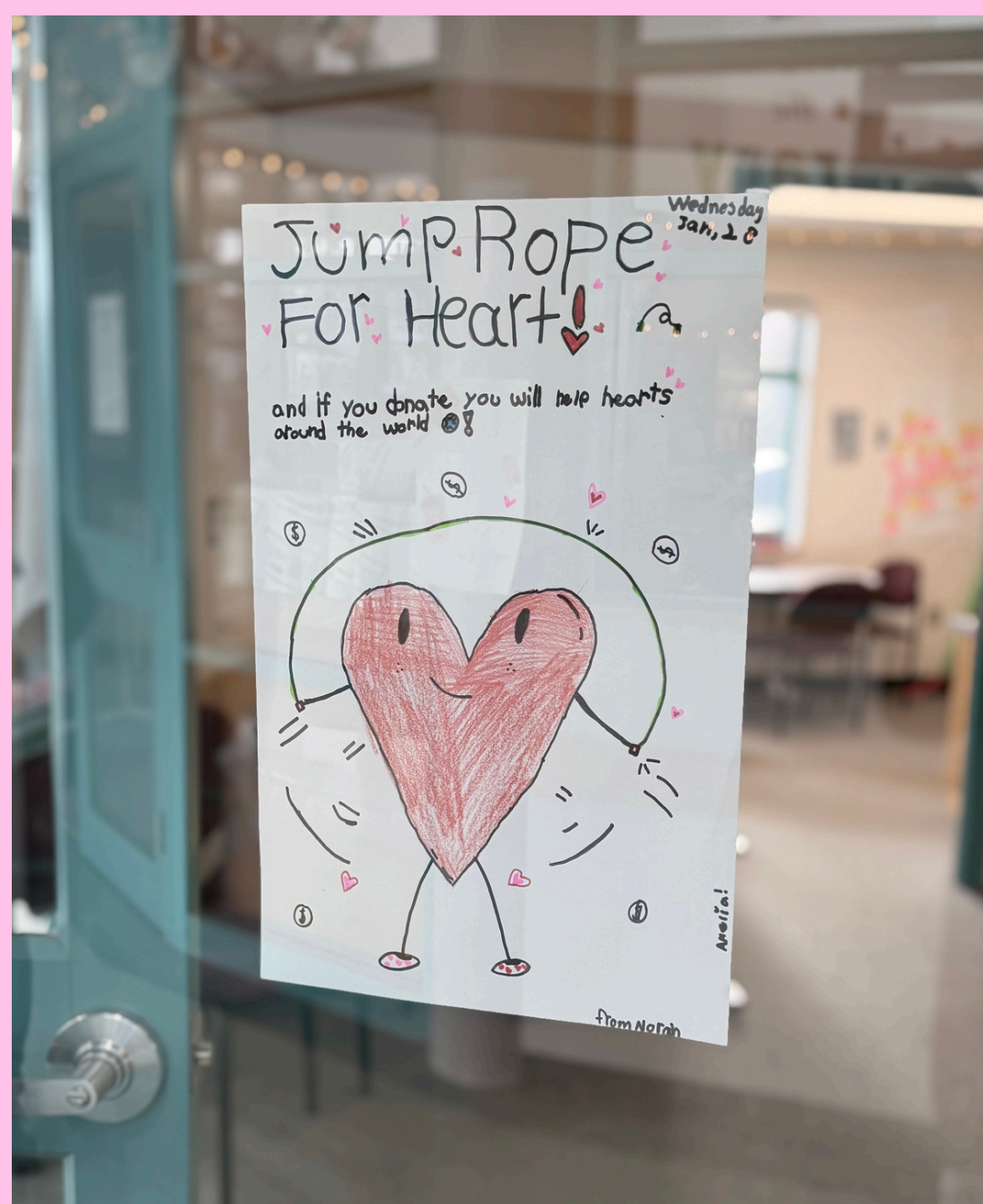
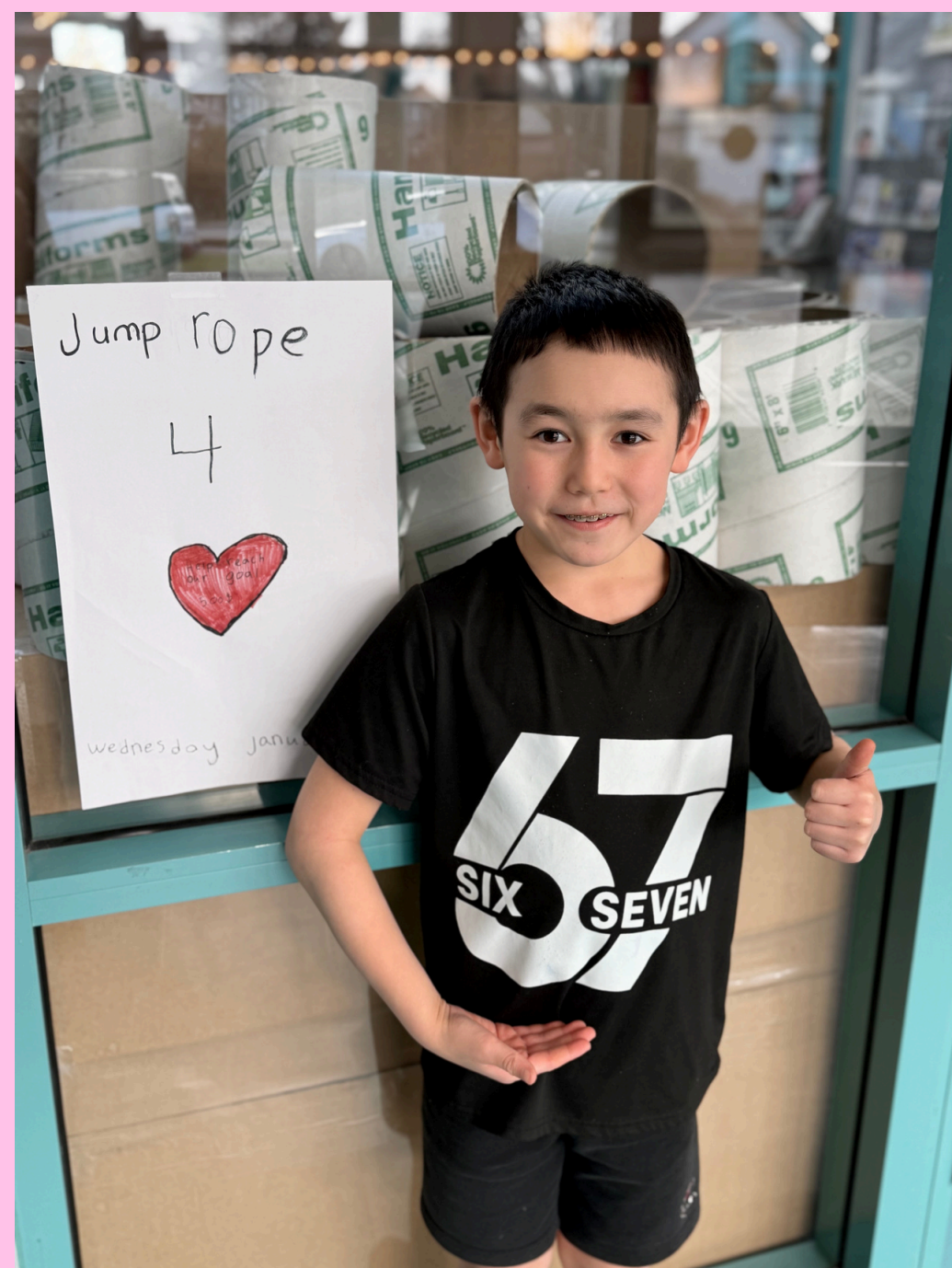
For Hot Lunches: Orders must be placed and paid in full 9 days prior to the scheduled lunch date as per our vendor requirements. Unpaid orders will be canceled. **Make sure you follow the order all the way to the end to pay!**

Munchalunch automatically cancels an order that hasn't been paid within 1 hour. Munchalunch charges us a per transaction fee, so if you are able to order and pay for multiple lunches in one transaction you will be saving the PAC transaction fees. If your child is absent on the lunch date, you are welcome to come and pick up the order by noon in the gym foyer, but the **food cannot be kept for the following day**.

Consistent with previous years, there are NO REFUNDS.

For any questions or issues ordering, please email lordbyngelementarypac@gmail.com, do not approach admin or staff.

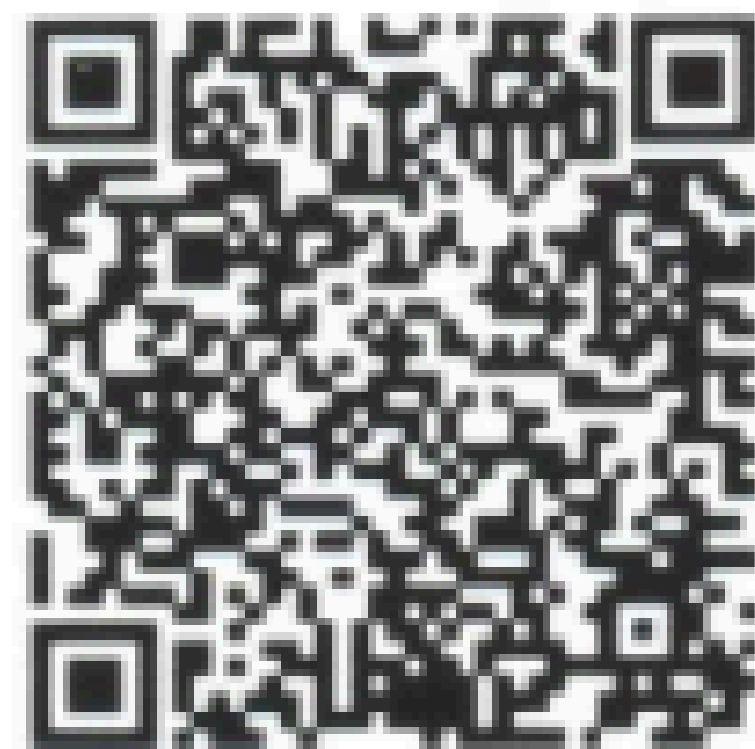
**WEDNESDAY,
JANUARY 28TH
IS JUMP DAY!!!**



OUR SCHOOL IS EXCITED TO BE PARTICIPATING IN HEART & STROKE'S JUMP ROPE FOR HEART PROGRAM NEXT WEEK! STUDENTS WILL LEARN EASY HEALTHY HABITS AND RAISE FUNDS TO SUPPORT LIFESAVING HEART AND BRAIN RESEARCH. FAMILIES CAN DONATE ONLINE VIA THE QR CODE ON THE POSTCARD, THROUGH SCHOOLCASH ONLINE, OR BY BRINGING A CASH DONATION ON "JUMP DAY". WE WILL BE HAVING OUR SCHOOL WIDE "JUMP DAY" ON WEDNESDAY, JANUARY 28TH, AND STUDENTS ARE ENCOURAGED TO WEAR RED THAT DAY IN SUPPORT OF HEART HEALTH. THANKS IN ADVANCE FOR YOUR SUPPORT.



Scan to support





Check the Byng website for loads of important information!

CLICK HERE 

<https://byng.sd38.bc.ca/>



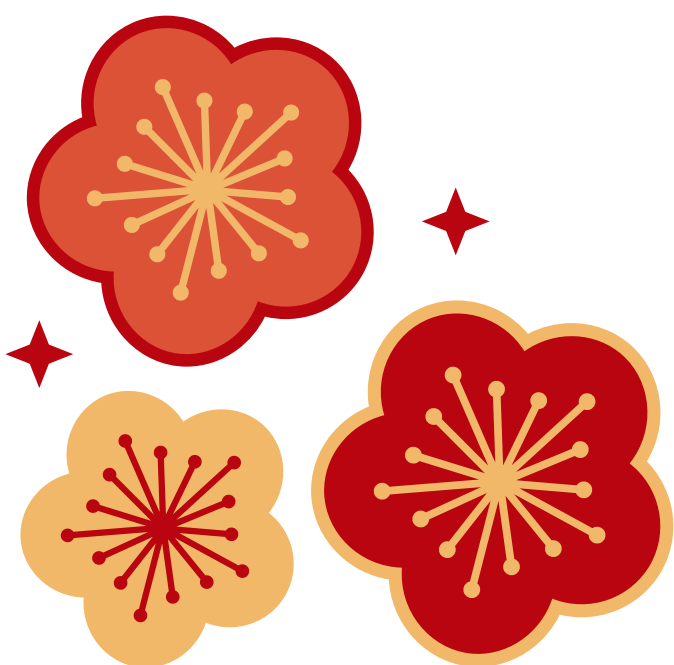
LOOKING AHEAD

JANUARY 26TH ~ PRO-D DAY ~ NO SCHOOL FOR STUDENTS

JANUARY 28TH ~ "JUMP DAY" ~ HEART & STROKE'S JUMP ROPE FOR HEART PROGRAM

FEBRUARY 6TH ~ K-POP DANCE NIGHT @ HUGH BOYD @ 6PM

FEBRUARY 13TH ~ PRO-D DAY ~ NO SCHOOL FOR STUDENTS



FEBRUARY 16TH ~ FAMILY DAY ~ NO SCHOOL

FEBRUARY 17TH ~ LUNAR NEW YEAR

FEBRUARY 17TH ~ BEGINNING OF RAMADHAN

