

WEEK AT A GLANCE

LORD BYNG ELEMENTARY SCHOOL

FEBRUARY 2ND - 6TH

MONDAY,
FEBRUARY
2ND

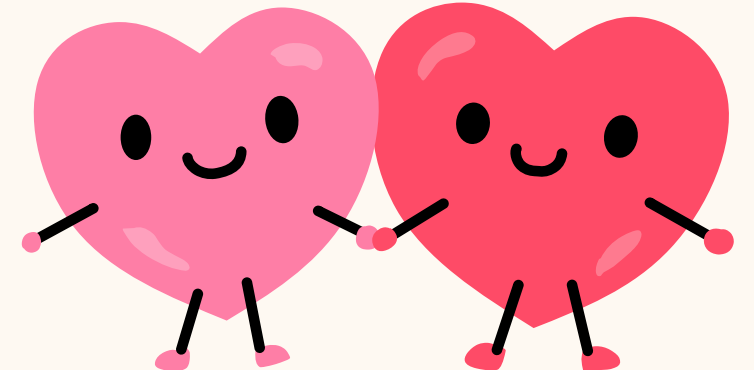
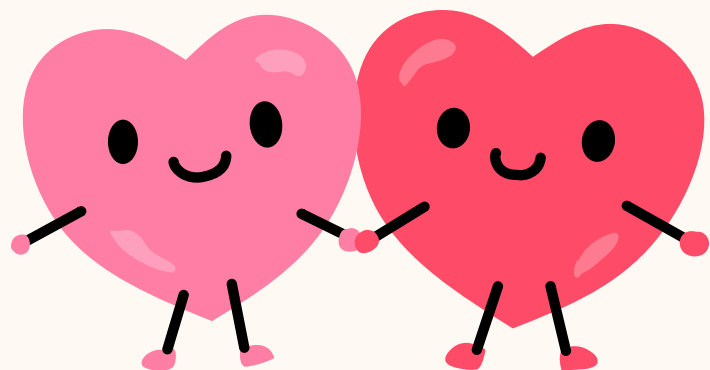
TUESDAY,
FEBRUARY
3RD

WEDNESDAY,
FEBRUARY
4TH

THURSDAY,
FEBRUARY
5TH

FRIDAY,
FEBRUARY
6TH

K-POP DANCE
NIGHT @
6PM



THANK YOU TO ALL THAT DONATED TO THE HEART & STROKE FOUNDATION. WE WILL TALLY UP THE DONATIONS NEXT WEEK!

WE ARE LOOKING FORWARD TO LOTS OF K-POP MUSIC AND DANCING NEXT WEEK, FINISHING OFF WITH OUR SHOW AT HUGH BOYD ON FRIDAY NIGHT! WE HOPE TO SEE YOU ALL THERE!



LORD BYNG'S GOT TALENT MARCH 13TH & 14TH

Once again, we will be showcasing the talents of our Byng Bears in March! Please watch for permission forms sent home with students and ensure they are returned to the office by February 20th. Auditions are happening February 23rd & 26th!



THE LUNAR NEW YEAR OFFICIALLY BEGINS ON FEBRUARY 17TH

ALSO KNOWN AS THE SPRING FESTIVAL OR CHINESE NEW YEAR, IT MARKS THE BEGINNING OF A NEW YEAR ON THE TRADITIONAL LUNISOLAR CHINESE CALENDAR. IT IS ONE OF THE MOST IMPORTANT HOLIDAYS IN CHINESE CULTURE.

HAPPY NEW YEAR TO ALL THAT CELEBRATE! AS YOU WELCOME THE YEAR OF THE HORSE, MAY THIS TIME OF RENEWAL BRING JOY, CONNECTION, AND HOPE TO YOU AND YOUR FAMILIES.

STUDENT LEARNING SURVEY 2025/2026

THE PROVINCIAL STUDENT LEARNING SURVEY IS UNIQUE IN ITS SCOPE, SIZE AND USEFULNESS TO SCHOOLS. IT GATHERS INFORMATION FROM PARENTS/GUARDIANS/CAREGIVERS, TEACHERS, AND STUDENTS ON TOPICS RELATED TO SCHOOL ENVIRONMENT, SAFETY, AND ACHIEVEMENT. THE INFORMATION IS USED FOR PLANNING IN INDIVIDUAL SCHOOLS AND PROVIDES A DISTRICT AND PROVINCIAL PERSPECTIVE. IN APRIL, 2026 THE STUDENT LEARNING SURVEY WILL BE ADMINISTERED TO STUDENTS IN GRADES 4 AND 7.

WE ENCOURAGE PARENTS/GUARDIANS/CAREGIVERS TO PARTICIPATE IN THIS SURVEY, AS THE RESULTS ARE IMPORTANT IN IDENTIFYING AND CELEBRATING CURRENT STRENGTHS, AS WELL AS DETERMINING WHERE THE SCHOOL NEEDS TO FOCUS IMPROVEMENT. THE SURVEYS CONTAIN STANDARD QUESTIONS FOR THE PROVINCE – IN ADDITION, QUESTIONS FROM THE SCHOOL AND/OR DISTRICT THAT FOCUS ON LOCAL CONDITIONS OR ISSUES MAY BE INCLUDED.

**THE SURVEY CAN BE COMPLETED ELECTRONICALLY AND CAN BE ACCESSED ON THE INTERNET AT
[HTTPS://WWW2.GOV.BC.CA/GOV/CONTENT/EDUCATION-
TRAINING/K-12/SUPPORT/STUDENT-LEARNING-SURVEY](https://www2.gov.bc.ca/gov/content/education-training/k-12/support/student-learning-survey).**

ANY COMPUTER OR MOBILE DEVICE WITH AN INTERNET CONNECTION CAN BE USED, AND ACCESS TO THE E-SURVEY IS SIMPLE AND SECURE. THE SURVEY CAN BE ACCESSED THROUGH THE LINK AND BY CLICKING ON TAKE THE SURVEY. ON THE LOGIN PAGE, CLICK ON THE PARENTS ICON, AND THEN SELECT THE SCHOOL DISTRICT AND SCHOOL NAME WHERE YOUR CHILD ATTENDS SCHOOL. PROVINCIAL, DISTRICT AND SCHOOL REPORTS FOR PREVIOUS YEARS CAN BE VIEWED AT THE SAME SITE UNDER THE RESULTS SECTION. THE E-SURVEY SITE WILL BE OPEN UNTIL MAY 1, 2026.



IMPORTANT! IMPORTANT! IMPORTANT!

Things to consider if your child feels unwell...

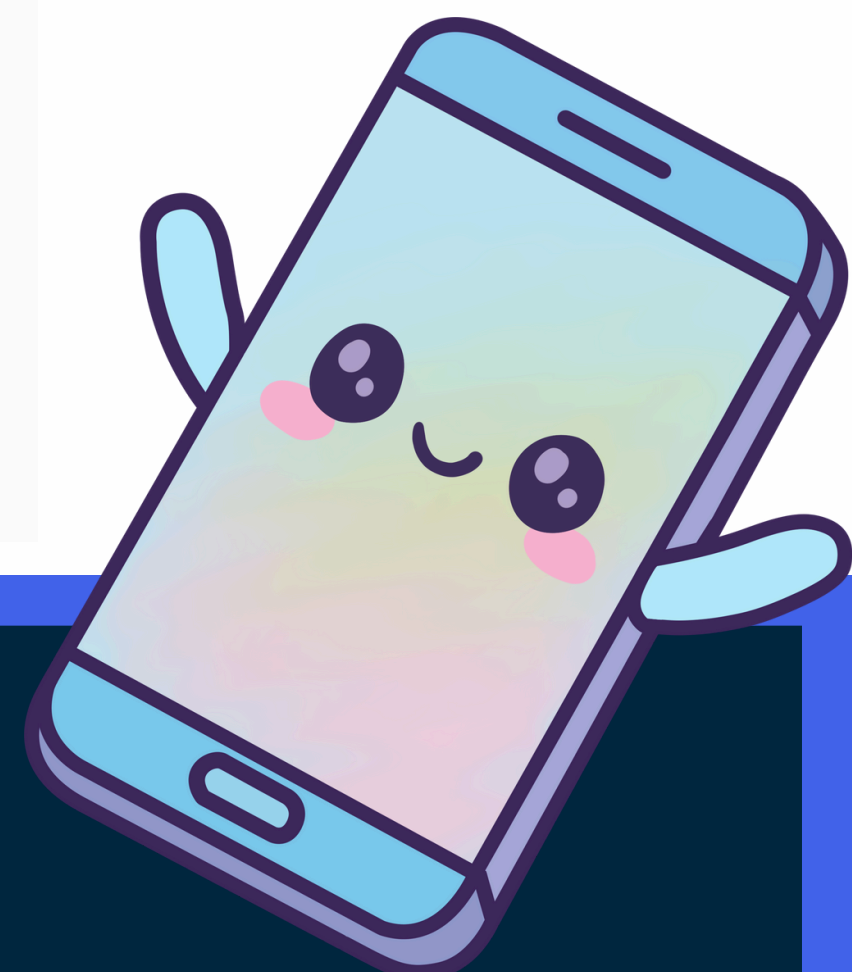
Without proper rest, a child may have a hard time fighting an illness or be at risk for other illnesses. Please keep your child home if they:

- Have a fever. Are too sick to take part in all normal school activities.
- Have a suspected or known communicable disease (i.e. strep throat, chicken pox, measles).
- Is vomiting or have diarrhea. It is recommended that students be symptom free at least 24 hours before returning to school.

Keep your child home until they are able to participate fully in normal school activities or as directed by a health care provider.

If the school finds it necessary to send your child home because of illness, please make sure you have arranged an emergency contact if you are not available.

Lord Byng Elementary
Early Warning Line
604.668.6587



SCHOOL MESSENGER TEXT ALERTS

STAY INFORMED WITH SCHOOLMESSENGER TEXT ALERTS (OPT-IN)

OUR DISTRICT USES SCHOOLMESSENGER TO SHARE IMPORTANT SCHOOL AND DISTRICT UPDATES, INCLUDING WEATHER CLOSURES, EMERGENCY NOTIFICATIONS, REMINDERS, AND TIME-SENSITIVE ANNOUNCEMENTS. ALL FAMILIES WITH A CURRENT CELL PHONE NUMBER IN OUR MYEDBC DATABASE WILL RECEIVE A TEXT MESSAGE FROM SCHOOLMESSENGER (TEXT #: 978338) THIS MONTH.

TO START RECEIVING TEXT ALERTS, YOU WILL NEED TO OPT IN.

HOW TO OPT IN:

WATCH FOR A TEXT FROM SCHOOLMESSENGER (TEXT #: 978338).

REPLY WITH "Y" TO 978338.

YOU WILL RECEIVE A CONFIRMATION MESSAGE LETTING YOU KNOW YOU ARE SUCCESSFULLY SUBSCRIBED!

WANT ALERTS ON MORE THAN ONE DEVICE?

TO RECEIVE TEXT ALERTS ON MULTIPLE PHONES, EACH PHONE NUMBER MUST OPT IN SEPARATELY BY REPLYING "Y" TO 978338.



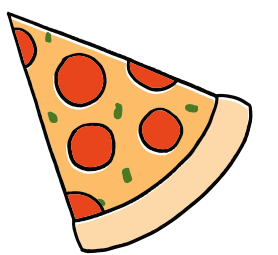
PIZZA WEDNESDAYS & HOT LUNCH!!!

All New Families must register a new account with Munchalunch

Go to <https://munchalunch.com/schools/LordByng> Click the "Register Here" button. The system will guide you through the process of adding children. **After** adding your child(ren) click the "**Order Lunch**" button to order. Next time, just click the "Login here" button to access your account. It is recommended you sign up to receive a reminder email the day before hot lunch is delivered. Returning families will just need to update their students' grade and division upon first signing in.



HOT LUNCH DAYS



EVERY WEDNESDAY: PIZZA FACTORY

FEB 20: TACO LUIS (DUE FEB 12)

For Pizza Wednesdays: Order must be placed and paid in full the **Sunday before that Wednesday**.

For Hot Lunches: Orders must be placed and paid in full 9 days prior to the scheduled lunch date as per our vendor requirements. Unpaid orders will be canceled. **Make sure you follow the order all the way to the end to pay!**

Munchalunch automatically cancels an order that hasn't been paid within 1 hour. Munchalunch charges us a per transaction fee, so if you are able to order and pay for multiple lunches in one transaction you will be saving the PAC transaction fees. If your child is absent on the lunch date, you are welcome to come and pick up the order by noon in the gym foyer, but the **food cannot be kept for the following day**.

Consistent with previous years, there are NO REFUNDS.

For any questions or issues ordering, please email lordbyngelementarypac@gmail.com, do not approach admin or staff.



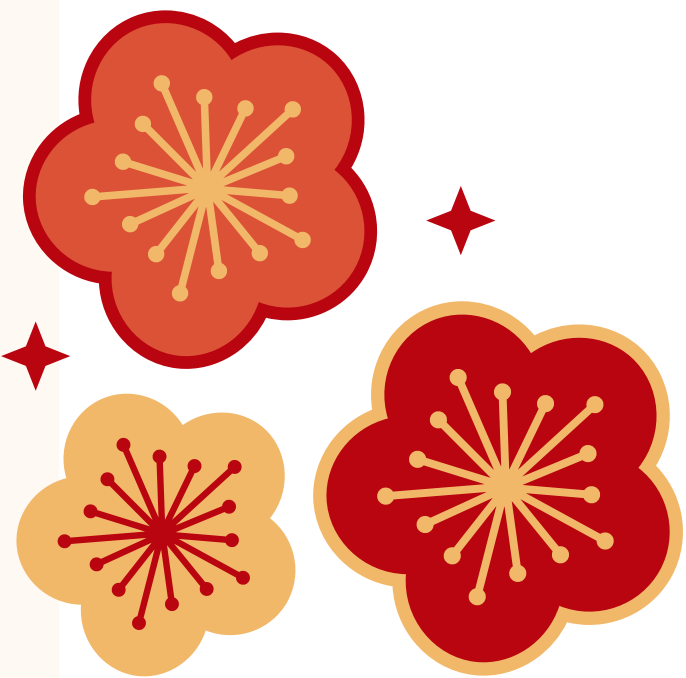
Check the Byng website for loads of important information!

CLICK HERE 

<https://byng.sd38.bc.ca/>

LOOKING AHEAD

FEBRUARY 6TH ~ K-POP DANCE NIGHT @ HUGH BOYD @ 6PM



FEBRUARY 13TH ~ PRO-D DAY ~ NO SCHOOL FOR STUDENTS

FEBRUARY 16TH ~ FAMILY DAY ~ NO SCHOOL

FEBRUARY 17TH ~ LUNAR NEW YEAR

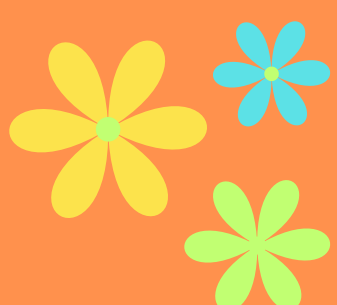
FEBRUARY 17TH ~ BEGINNING OF RAMADHAN

FEBRUARY 20TH ~ HOT LUNCH ~ TACO LUIS

FEBRUARY 25TH ~ PINK SHIRT DAY



FEBRUARY 25TH & 26TH ~ FAMILY CONFERENCES ~ STUDENT EARLY DISMISSAL @ 1:45PM



**SPRING BREAK
MARCH 16TH - 27TH**

