

WEEK AT A GLANCE LORD BYNG ELEMENTARY SCHOOL

April 17th - 21st

Monday,
April 17th

Tuesday,
April 18th

Wednesday,
April 19th

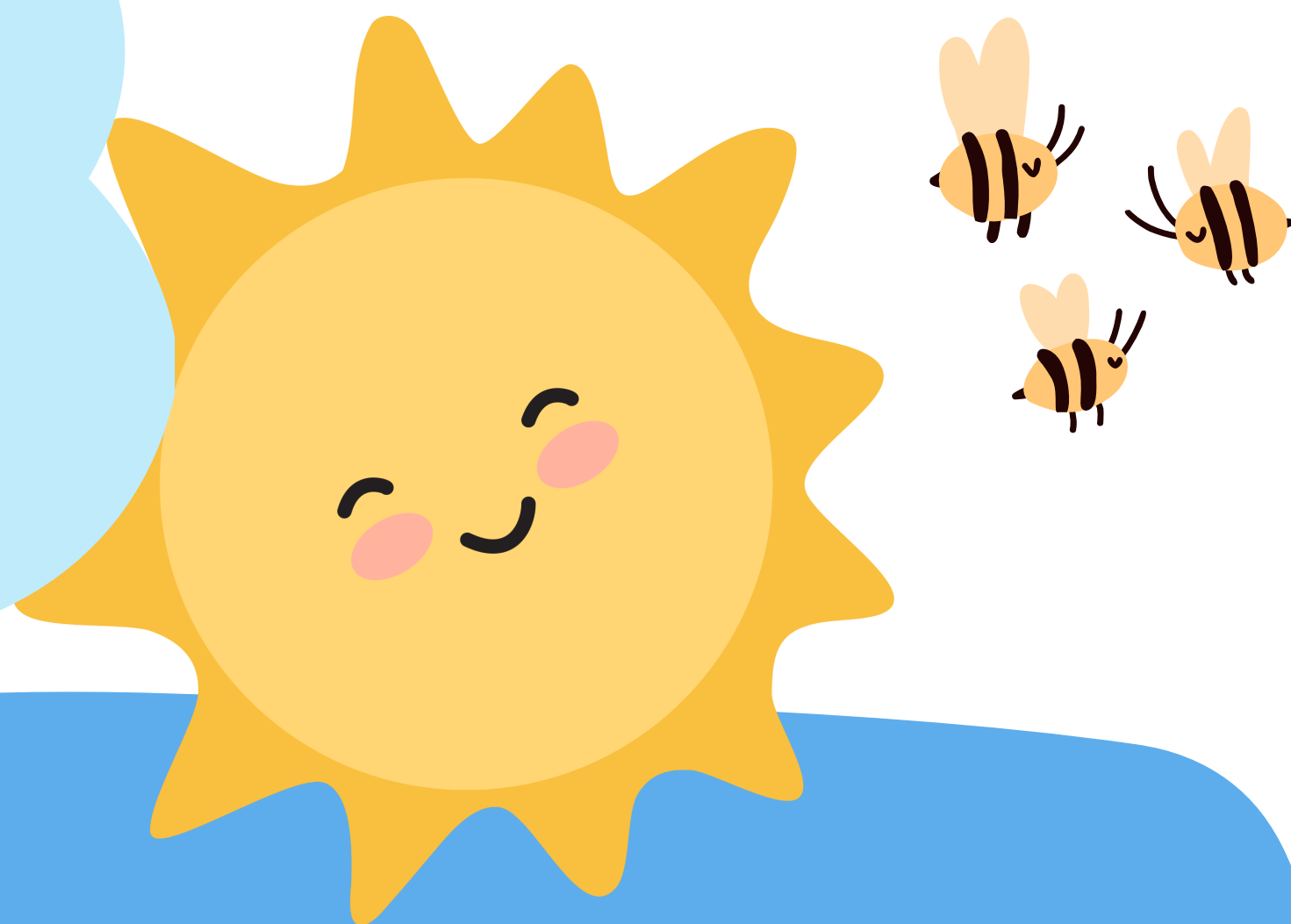
Thursday,
April 20th

Friday,
April 21st

Hot Lunch ~
Fukuroku
Sushi

In Byng News.....

Ms. Lee, our VP, will return to work part-time from her medical leave, starting on April 20. She wants to thank the Byng Community for their well wishes and is looking forward to seeing everyone again!



Term 2
Report Cards
are available
for online for
viewing until
June 8th

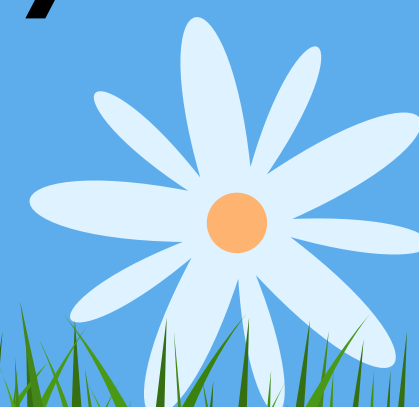
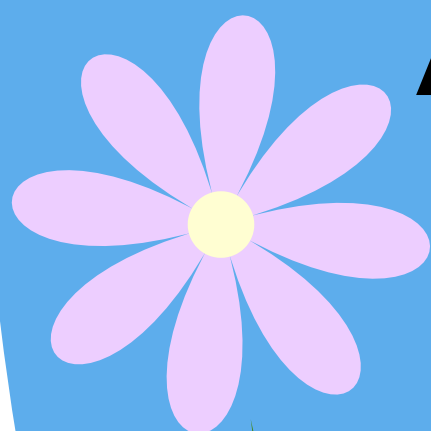
Upcoming Events

April 14th ~ Vaisakhi

April 21st ~ Hot Lunch Day ~ Sushi

April 21st/22nd ~ Eid al-Fitr

April 22nd ~ Earth Day





Dress for the Weather!



Rain Boots!



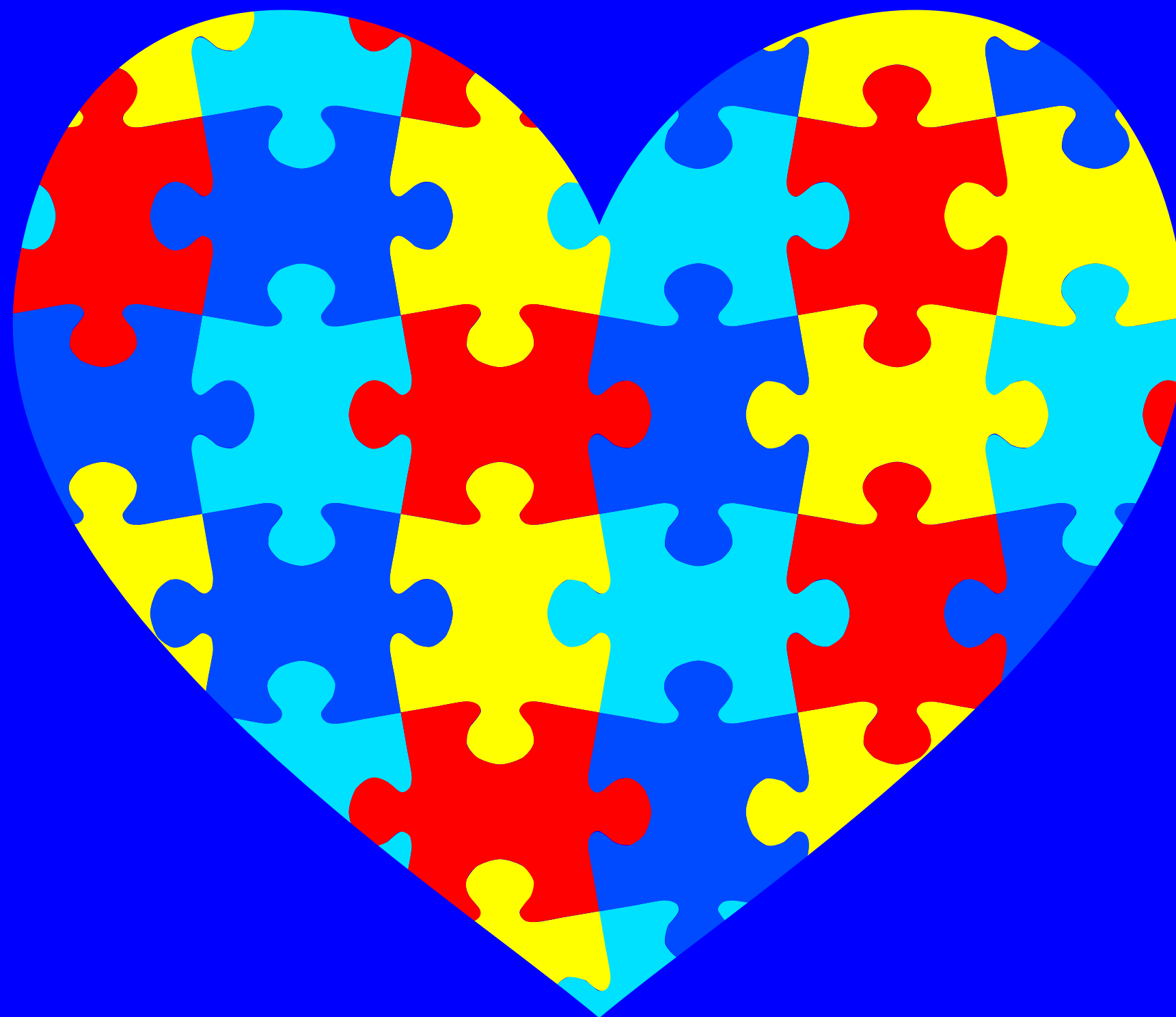
Waterproof Jacket




Change of Clothes!



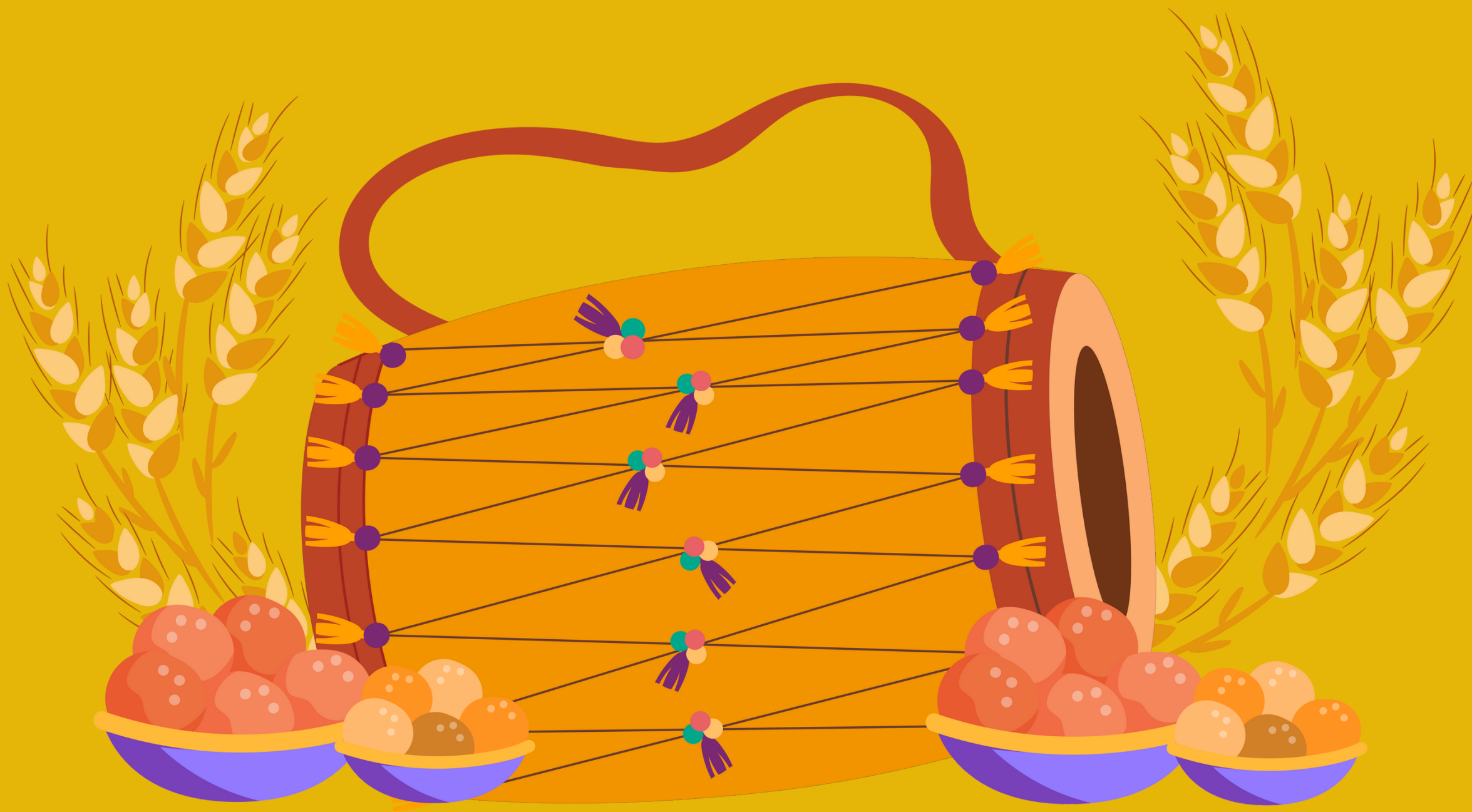
APRIL IS NATIONAL AUTISM AWARENESS MONTH



NATIONAL AUTISM AWARENESS MONTH RAISES AWARENESS FOR AUTISM AND ASPERGER'S SYNDROME DURING APRIL. AUTISM IS A COMPLEX BRAIN DISORDER THAT OFTEN INHIBITS A PERSON'S ABILITY TO COMMUNICATE, RESPOND TO SURROUNDINGS, AND FORM RELATIONSHIPS WITH OTHERS.



Eid al-Fitr or the Festival of Sweets is the earlier of the two official holidays celebrated within Islam. The religious holiday is celebrated by Muslims worldwide because it marks the end of the month-long dawn-to-sunset fasting of Ramadan.



Vaisakhi is a very important day for Sikhs and one of the most colourful events in the Sikh calendar. It occurs during mid-April every year and traditionally concurs in Punjab with the first harvesting of the crops for the year. So, historically, it has been a very joyous occasion and a time for celebration.



STUDENT LEARNING SURVEY 2022/2023

THE PROVINCIAL STUDENT LEARNING SURVEY IS UNIQUE IN ITS SCOPE, SIZE AND USEFULNESS TO SCHOOLS. IT GATHERS INFORMATION FROM PARENTS/GUARDIANS/CAREGIVERS, TEACHERS, AND STUDENTS ON TOPICS RELATED TO SCHOOL ENVIRONMENT, SAFETY, AND ACHIEVEMENT. THE INFORMATION IS USED FOR PLANNING IN INDIVIDUAL SCHOOLS AND PROVIDES A DISTRICT AND PROVINCIAL PERSPECTIVE. IN APRIL OF 2023, THE STUDENT LEARNING SURVEY WILL BE ADMINISTERED TO STUDENTS IN GRADES 4 AND 7, THEIR PARENTS/GUARDIANS/CAREGIVERS, AND ALL SCHOOL STAFF. WE ENCOURAGE PARENTS/GUARDIANS/CAREGIVERS TO PARTICIPATE IN THIS SURVEY, AS THE RESULTS ARE IMPORTANT IN IDENTIFYING AND CELEBRATING CURRENT STRENGTHS, AS WELL AS DETERMINING WHERE THE SCHOOL NEEDS TO FOCUS IMPROVEMENT. THE SURVEYS CONTAIN STANDARD QUESTIONS FOR THE PROVINCE - IN ADDITION, QUESTIONS FROM THE SCHOOL AND/OR DISTRICT THAT FOCUS ON LOCAL CONDITIONS OR ISSUES MAY BE INCLUDED. THE SURVEY CAN BE COMPLETED ELECTRONICALLY AND CAN BE ACCESSED ON THE INTERNET AT [HTTP://WWW.BCED.GOV.BC.CA/SAT_SURVEY](http://www.bced.gov.bc.ca/sat_survey). ANY COMPUTER WITH AN INTERNET CONNECTION CAN BE USED, AND ACCESS TO THE E-SURVEY IS SIMPLE AND SECURE. THE SURVEY CAN BE ACCESSED THROUGH THE LINK WITH OR WITHOUT AN ANONYMOUS LOGON CODE BY SELECTING THE SCHOOL DISTRICT AND SCHOOL NAME WHERE YOUR CHILD ATTENDS SCHOOL. PROVINCIAL, DISTRICT AND SCHOOL REPORTS FOR PREVIOUS YEARS CAN BE VIEWED AT THE SAME SITE UNDER THE RESULTS SECTION. THE E-SURVEY SITE WILL BE OPEN UNTIL APRIL 29TH.



Reminder

Please ensure you are using the correct entry and exits from our school parking lot. We have noticed that some drivers are using the wrong one and it is making for a messy traffic situation during the very busy pickup and dropoff times in the lot! When in doubt, please look at the arrows to indicate which direction you should be going!

Thank you!!!



LORD BYNG ELEMENTARY PAC

PIZZA DAYS AND HOT LUNCH DAYS!!!

How to order...

If you haven't ordered yet this year, you must register a new account with Munchalunch:

Go to <https://munchalunch.com/schools/LordByng>

Click the "Register Here" button. The system will guide you through the process of adding children. **After** adding your child(ren) click the "Order Lunch" button to order. Next time, just click the "Login here" button to access your account.

It is recommended you sign up to receive a reminder email the day before hot lunch is delivered.



Hot Lunch schedule is as follows:

Apr 21: Fukuroku Sushi

May 5: Booster Juice

Please note:

- If your child is absent on the lunch date, you are welcome to come and pick up the order between 11:45am-12:00pm at the foyer near the gym, but the food cannot be kept for the following day.
- Consistent with previous years, there are NO REFUNDS.

Deadlines to Order:

As always, lunch orders are due the Sunday before hot lunch day...

Fukuroku Sushi – Apr 10

Booster Juice – Apr 26

For any questions or issues ordering, please email
lordbynghotlunch@gmail.com

VERY IMPORTANT REMINDER FROM THE OFFICE.....

If your student is absent or late for school Please inform the office directly by calling the early warning line as soon as possible at 604.668.6587.



PAC



If you ever need to cancel a pre-ordered pizza lunch (ie. field trips, vacations, etc.), you can do that directly in Munchalunch! Go to the PAC's website: <https://byng.sd38.bc.ca/parents/parent-advisory-council> for instructions how to do it. The cost will be credited to your account and can be used at a future date. The cancellation be done BEFORE the deadline for that lunch (ie. the Sunday before) As always email lordbyngshotlunch@gmail.com with any questions.

Notable Days

April 14th ~ Vaisaki

April 17th/18th ~ Yom HaShoah (Holocaust Remembrance Day)

April 22nd ~ Eid-Al-Fitr

April 22nd ~ Earth Day

May 11th ~ District Track Meet

May 19th ~ Pro-D Day ~ No School

May 22nd ~ Victoria Day ~ No School

