



WEEK AT A GLANCE

LORD BYNG ELEMENTARY SCHOOL



June 27th - July 1st

Monday,
June 27th

Year End
Recognition
Assembly ~
1:15pm

Tuesday,
June 28th

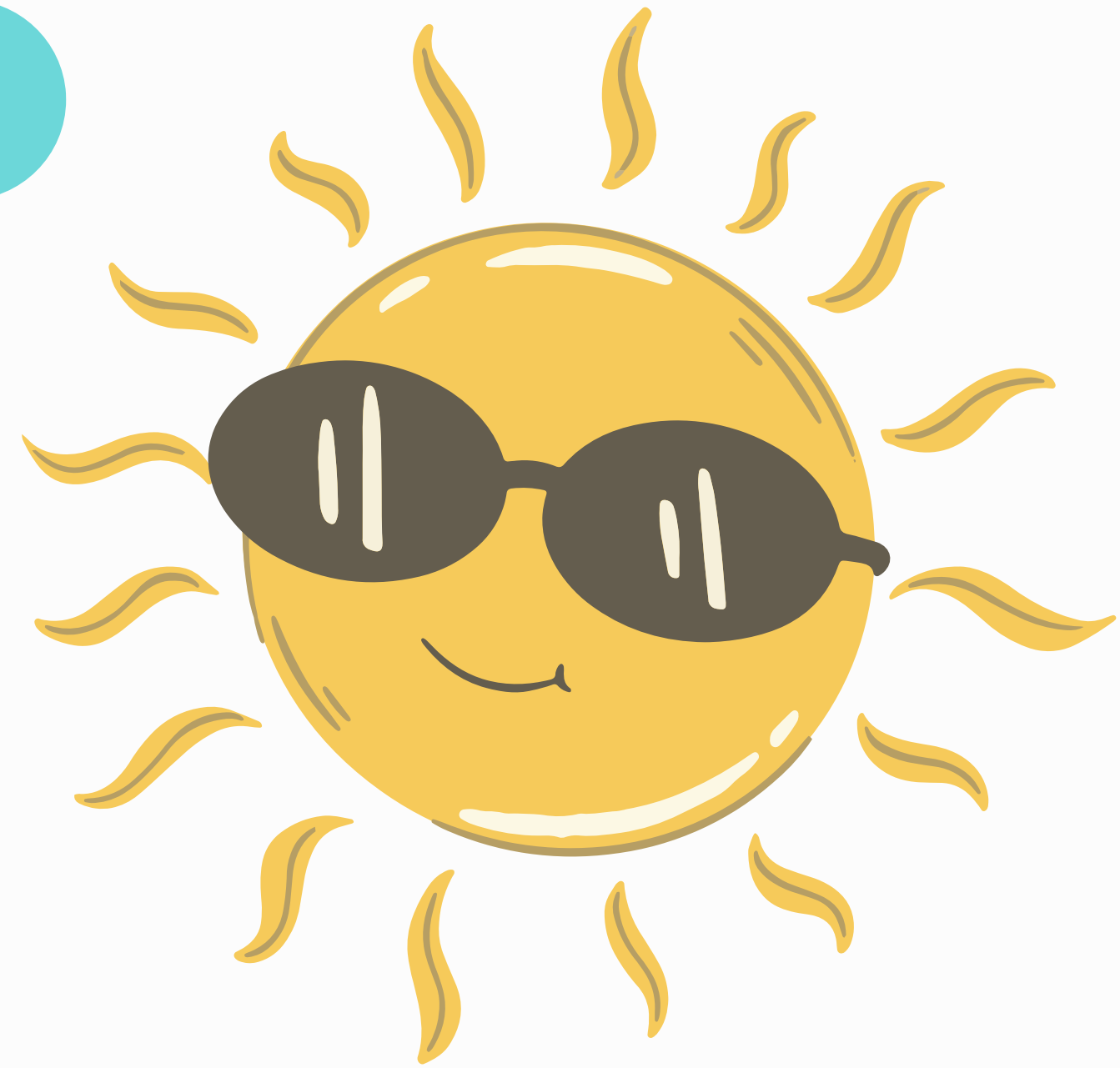
Wednesday,
June 29th

Grade 7 Farewell
Assembly ~
9:00am

Thursday,
June 30th

Friday,
July 1st

**Last Day of
School!!!!**



**On behalf of all the Byng staff;
wishing you a safe, relaxing
summer full of fun and great
memories! Thanks for another
great school year, Byng Bears!**

**We are looking for any families
that might be interested in
working with our grounds team
to water our flower and
vegetable beds this summer.
You could sign up for a week, or
two; whatever time you could
spare. We would work together
to coordinate times with you to
meet the grounds crew at Byng
so that they could hook up the
hose for watering. And if you
felt inclined, you could weed a
little as well! Please email Ms
Schulz if you are interested.
lschulz@sd38.bc.ca. Thank you!**

Upcoming Events

- June 27 ~ Year End Recognition Assembly ~ 1:15pm
- June 29 ~ Grade 7 Farewell Assembly ~ 9:00am
- June 29 ~ Last day of school for students





Have you checked out the Byng Website?

- get the latest news
- check out the latest WAAG
- calendar events
- important information
- and much more.....



byng.sd38.bc.ca



Reminder

Please report any absences, lates, early dismissals, etc. to our
Early Warning Line at (604) 668-6587

Let us know your child's name, division, WHY they are away and for how long

If your child(ren) will be arriving late, please drop them off at the office in order for us to adjust attendance accordingly.

THANK YOU

Contact Information:

Please ensure the school has your up-to-date email, residential address and contact information. This is very important if we do need to get in touch with you, that we have the correct information. Any updates or changes, please email byng@sd38.bc.ca



Daily Health Check



SHOULD I GO TO SCHOOL TODAY?

Just a reminder to please complete a daily health check before sending your kids to school.

The website and app will contain the most up-to-date BC health guideline information.



Reminder to families.... If your student will be returning late to school in September; LATER THAN 12:00 pm Wednesday, Sept. 7, 2022 AND ON or BEFORE Sept. 14, 2022 please be sure to complete and submit the Notice of Late Return Form that was sent home earlier this month. If you need a copy of this form, please contact the school office at 604.668.6649. Thank you!!!



On Monday, Tuesday & Wednesday of next week we will set tables outside the school front doors for students and families to check for lost items. Please remind your students to have a quick look for items they may have lost during the year! Any items not claimed will be donated to charity.



All of our Byng students will join the Grade 7 families for the Grade 7 Farewell assembly. We are still being cautious with numbers so only adult family members of Grade 7 students (3 tickets per family) will be invited. Thank you for your understanding.

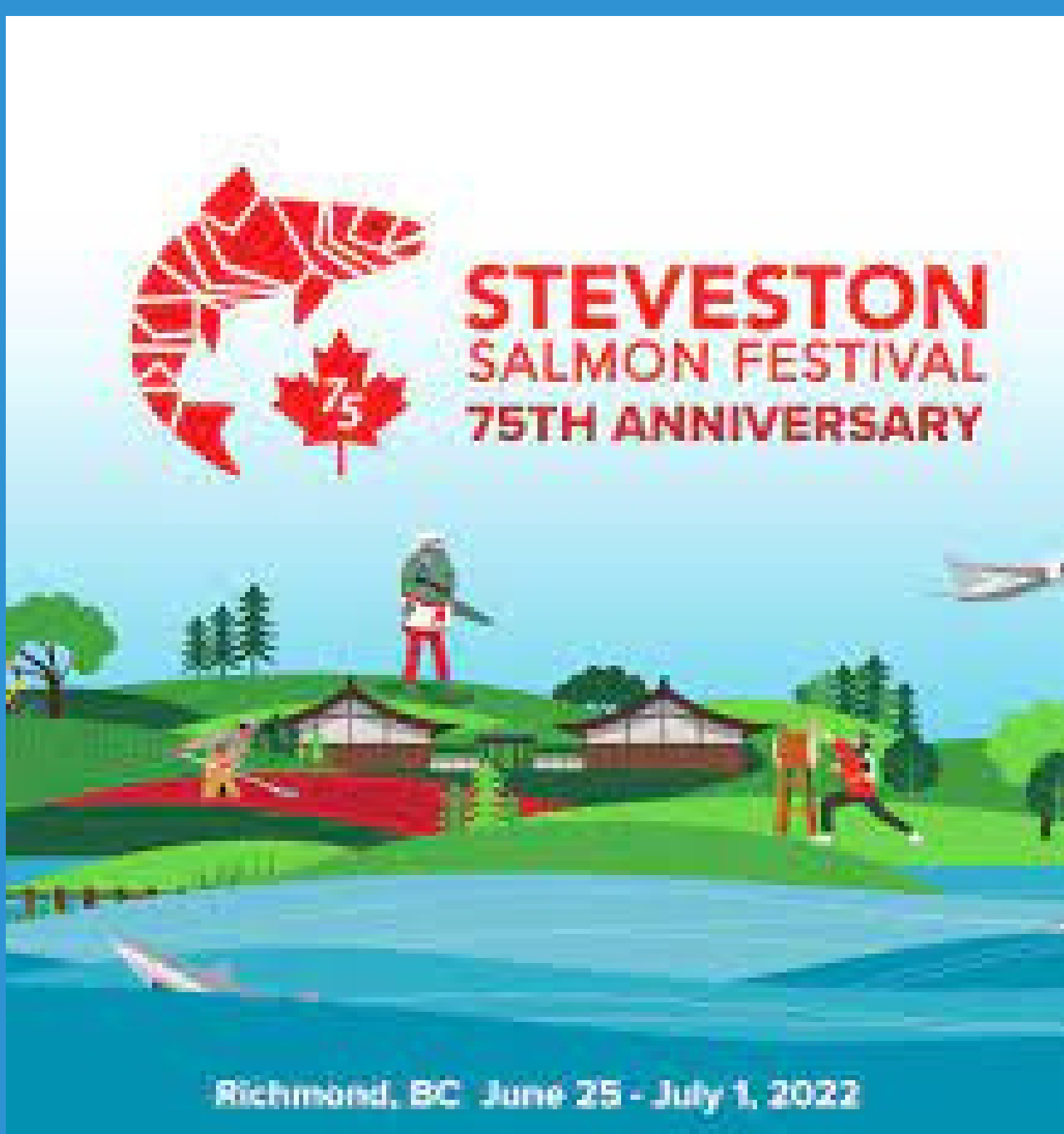


VERY IMPORTANT REMINDER FROM THE OFFICE.....

If your student is absent or late for school Please inform the office directly by calling the early warning line as soon as possible at 604.668.6587.



Summer



JUNE 25 - JULY 1

Band Concert!



Byng is a Mask Friendly Environment!



wearing a mask is a personal choice. let's all continue to be kind to each other

Mark your
Calendars for
next year!

Winter Break
Monday, December 19 - Monday,
January 2

Spring Break
Monday, March 13 - Friday,
March 24

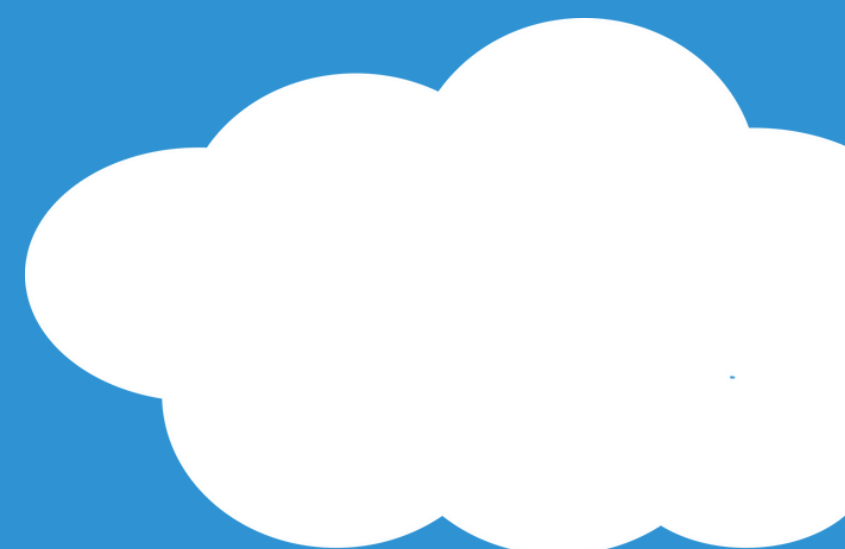
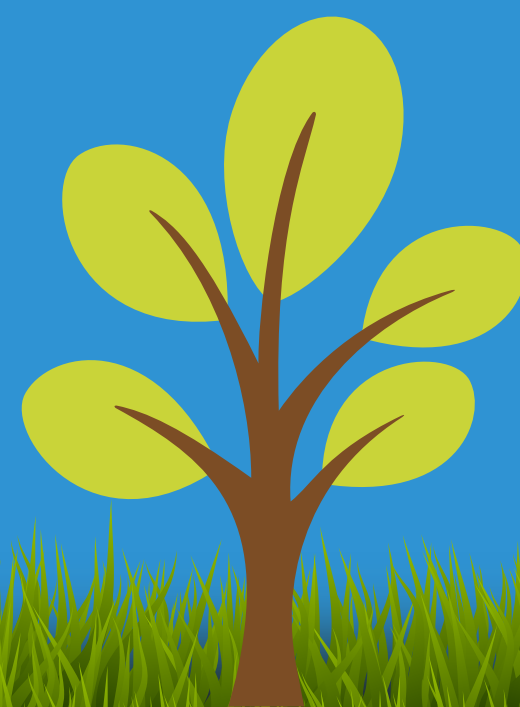
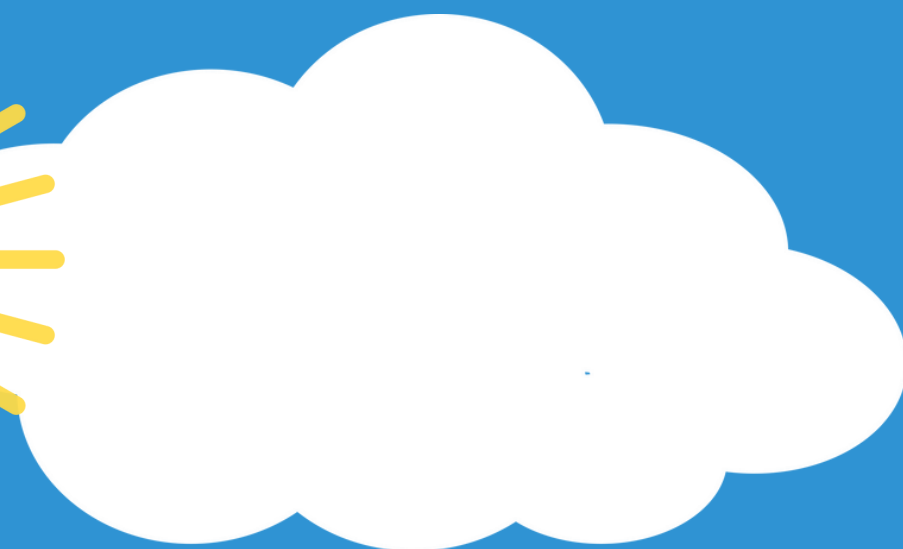
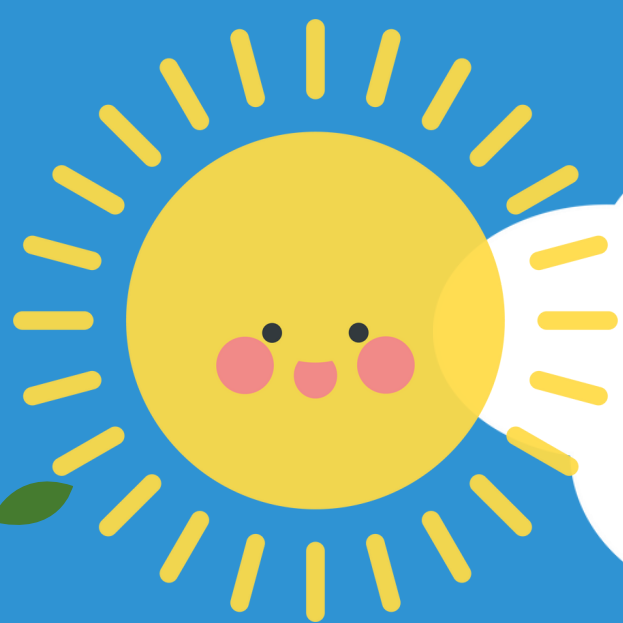
Looking ahead...

June 29 ~ Last day of School
for students

June 30 ~ Admin Day

September 6 ~ Back to School

September 23 ~ Non
Instructional Day



.....
**NATIONAL INDIGENOUS
HISTORY MONTH**
.....



National Indigenous Peoples' Day - June 21
In June, we commemorate National Indigenous History Month. During this month, take time to recognize the rich history, heritage, resilience and diversity of First Nations, Inuit and Métis Peoples across Canada

PRIDE

Pride Season is a term that refers to the wide range of Pride events that take place over the summer (June to September) when LGBTQ2 communities and allies come together to spotlight the resilience, celebrate the talent, and recognize the contributions of LGBTQ2 communities. Although special attention is put on the Pride events during the summer months, they happen throughout the year in many communities.

