



# WEEK AT A GLANCE LORD BYNG ELEMENTARY SCHOOL



## June 13th - 17th

**Monday,  
June 13th**

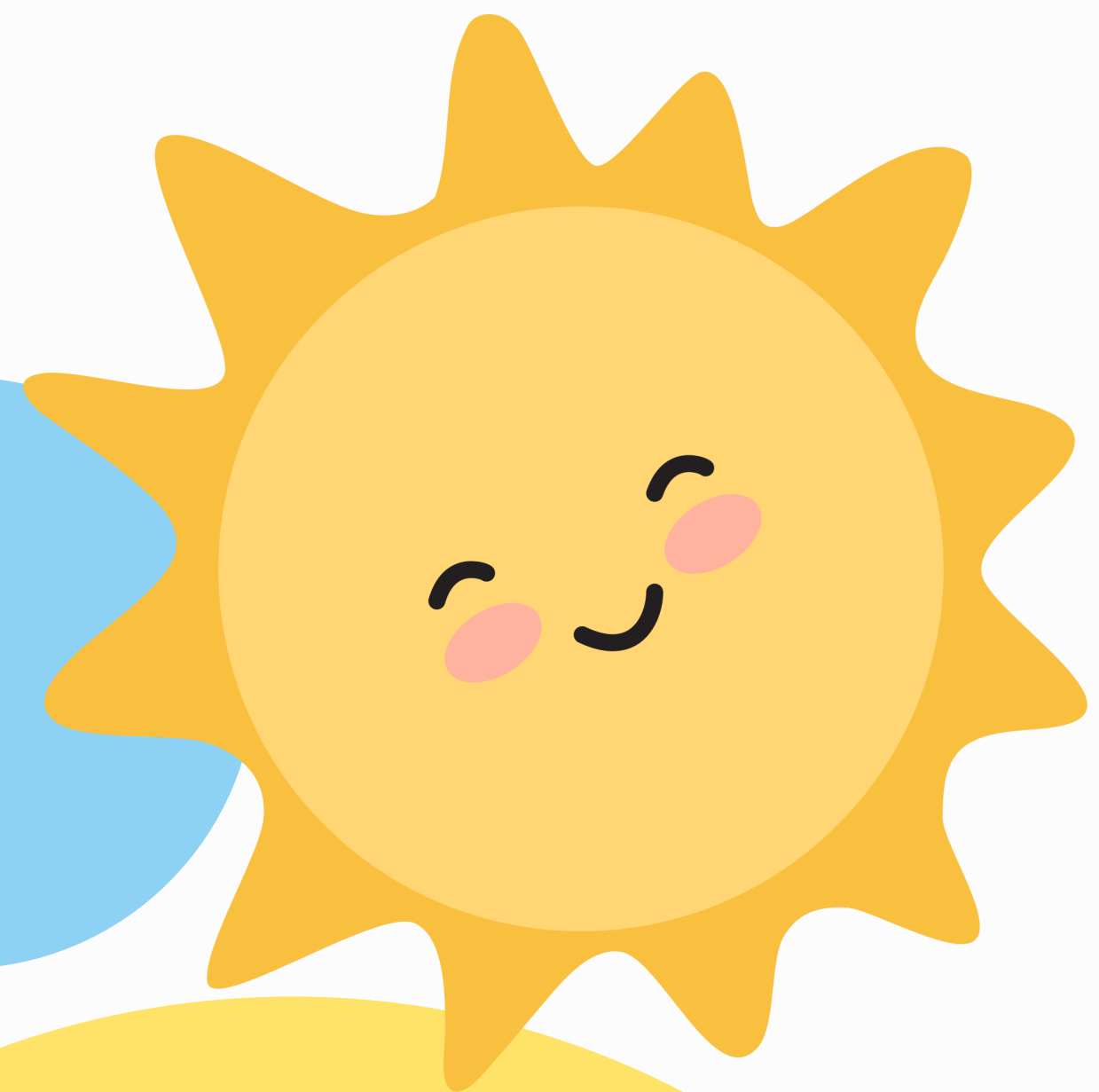
**Tuesday,  
June 14th**

**Wednesday,  
June 15th**

**Thursday,  
June 16th**

**Friday,  
June 17th**

It's a busy time at Byng with end-of-year class field trips, Grade 7 farewell planning, anticipating next year and winding down to enjoy a well-deserved summer break. Families, please watch for notices sent home and on your email inbox for important information!



### Upcoming Events

June 22 ~ Band Concert ~ 1:30pm  
June 27 ~ Year End Recognition  
Assembly ~ 1:15pm  
June 29 ~ Grade 7 Farewell  
Assembly ~ 9:00am  
June 29 ~ Last day of school for  
students





## Have you checked out the Byng Website?

- get the latest news
- check out the latest WAAG
- calendar events
- important information
- and much more.....



[byng.sd38.bc.ca](http://byng.sd38.bc.ca)



### Contact Information:

Please ensure the school has your up-to-date email, residential address and contact information. This is very important if we do need to get in touch with you, that we have the correct information. Any updates or changes, please email [byng@sd38.bc.ca](mailto:byng@sd38.bc.ca)

**Reminder to families.... If your student will be returning late to school in September; LATER THAN 12:00 pm Wednesday, Sept. 7, 2022 AND ON or BEFORE Sept. 14, 2022 please be sure to complete and submit the Notice of Late Return Form that was sent home earlier this week. If you need a copy of this form, please contact the school office at 604.668.6649. Thank you!!!**

## Grade 7 Farewell Activities

**Thursday June 23 – Grade 7 lunch at Old Spaghetti Factory & Afternoon Bowling (12pm-2:45pm)**

**Wednesday June 29th – Grade 7 Farewell Assembly @ 9am with a pizza lunch to follow at 12 pm**

## Reminder

Please report any absences, lates, early dismissals, etc. to our  
**Early Warning Line at (604) 668-6587**

Let us know your child's name, division, WHY they are away and for how long

If your child(ren) will be arriving late, please drop them off at the office in order for us to adjust attendance accordingly.

THANK  
YOU

## Daily Health Check



SHOULD I GO TO SCHOOL TODAY?

Just a reminder to please complete a daily health check before sending your kids to school.

The website and app will contain the most up-to-date BC health guideline information.



# VERY IMPORTANT REMINDER FROM THE OFFICE.....

If your student is absent or late for school Please inform the office directly by calling the early warning line as soon as possible at 604.668.6587.



## Who will be Canada's Most Active Community?



## Make Richmond Canada's Most Active Community!

Calling all families, friends, neighbours and fellow community members! It's time to get up and get moving with the ParticipACTION Community Better Challenge. The goal of this nationwide initiative is to help communities get active and have fun.

The rules of the challenge are simple: download the free ParticipACTION app through the Apple App Store or Google Play Store. Sign up with your Richmond postal code to rack your activity from June 1 to 30. Go for a walk on a trail or in a park, participate in a fitness class, splash around with friends at the pool, bike, golf, take a fitness class, workout in the gym, play tennis or pickleball to get active and win prizes!

Count whatever gets you moving. Be sure to track every active minute, every day.

Learn more [www.richmond.ca/participACTION](http://www.richmond.ca/participACTION)



## STEVESTON SALMON FESTIVAL 75TH ANNIVERSARY



# JUNE 25 - JULY 1

# Byng is a Mask Friendly Environment!



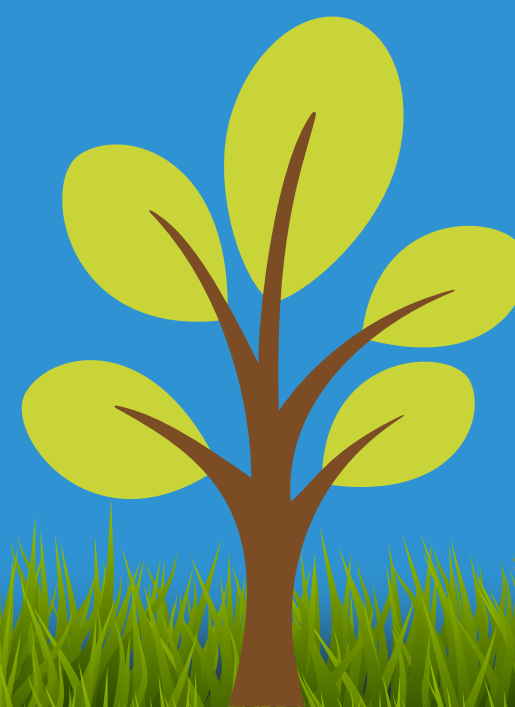
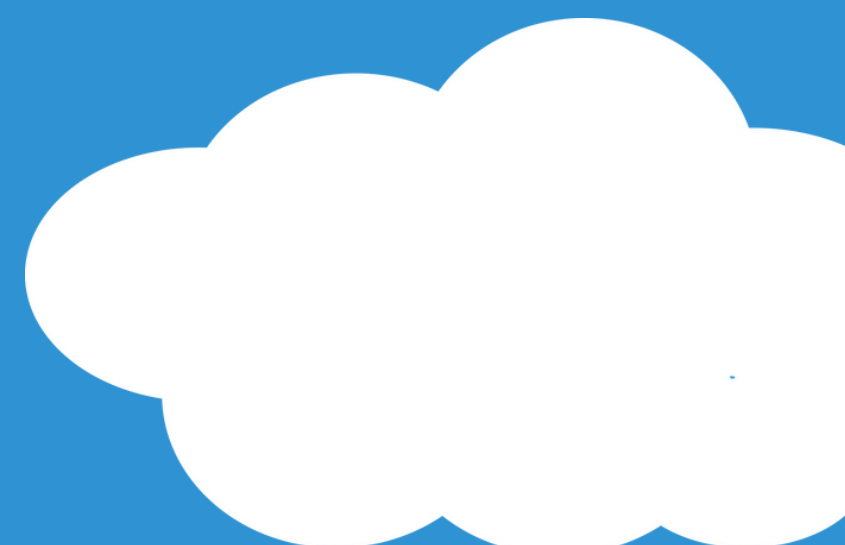
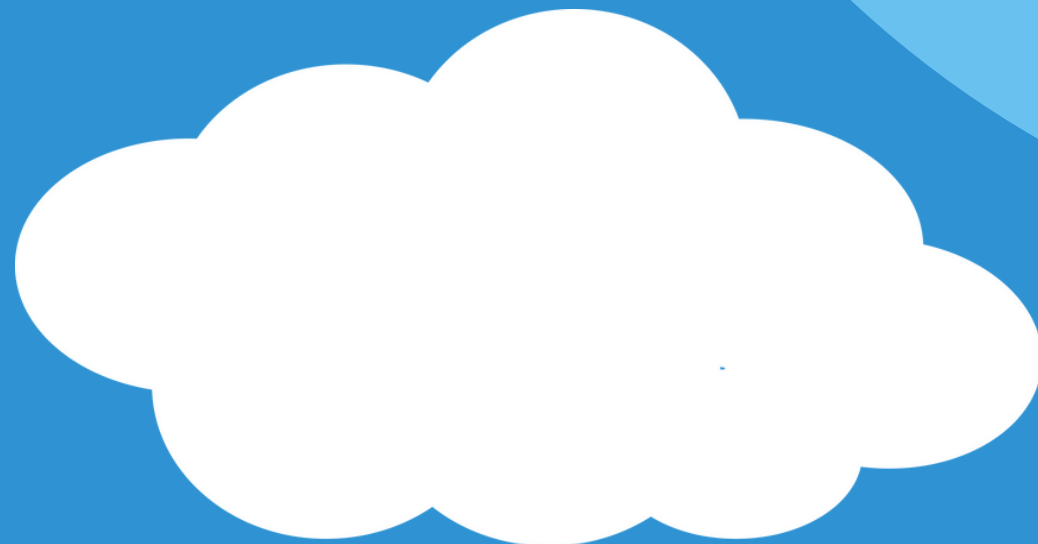
**wearing a mask is a personal choice. let's all continue  
to be kind to each other**

## Looking ahead....

**June 29 ~ Last day of School  
for students**


**June 30 ~ Admin Day**

**September 6 ~ Back to School**





.....  
**NATIONAL INDIGENOUS  
HISTORY MONTH**  
.....



**National Indigenous Peoples' Day - June 21**  
**In June, we commemorate National Indigenous History Month. During this month, take time to recognize the rich history, heritage, resilience and diversity of First Nations, Inuit and Métis Peoples across Canada**



**PRIDE**

**Pride Season is a term that refers to the wide range of Pride events that take place over the summer (June to September) when LGBTQ2 communities and allies come together to spotlight the resilience, celebrate the talent, and recognize the contributions of LGBTQ2 communities. Although special attention is put on the Pride events during the summer months, they happen throughout the year in many communities.**

